

# TROW JONES



121 Vista Avenue Catalina NSW

4  2  2 

You can have both with this beautiful resort-like home.

Mid-century inspired modern home on 5,229sqm of land, surrounded by native trees, on exclusive and tranquil Wilson's Ridge in Catalina. This spacious home is set in beautifully landscaped surrounds and is ideal for both family life and entertaining. The living areas have spacious open-plan layouts, flowing seamlessly to the hardwood terraces and deck outdoors. There are high ceilings and stunning Tasmanian Oak flooring throughout the house. Outdoor living and entertaining continues with a saltwater pool, wood-fired pizza oven and bar.

?4 generously sized bedrooms all with built-ins  
Master suite with WIR and large ensuite with bath, shower, and heated towel rail.?

**Price** : Contact Agent

**Land Size** : 5229 sqm

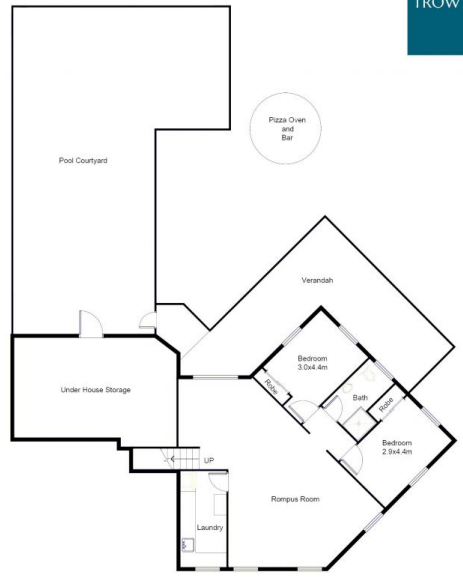
**View** : <https://www.trowjones.com/5888561>



**Mark Jones**  
02 8667 5330



ENTRY LEVEL



LOWER LEVEL

This floor plan including furniture, fixture measurements and dimensions are approximate and for illustrative purposes only. Boxbrownie.com gives no guarantee, warranty or representation as to the accuracy and layout. All enquiries must be directed to the agent, vendor or party representing this floor plan.

121 Vista Ave Catalina