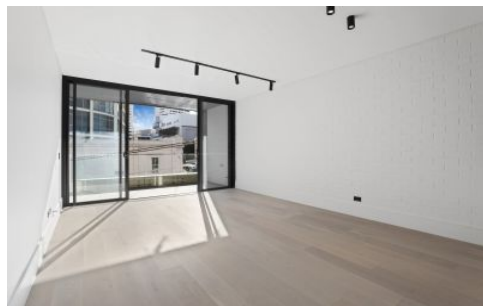
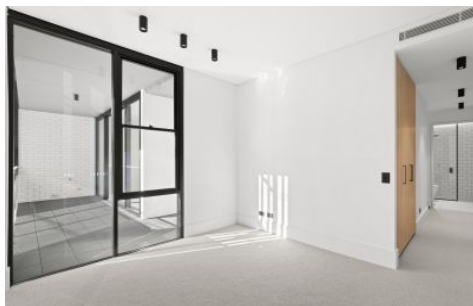
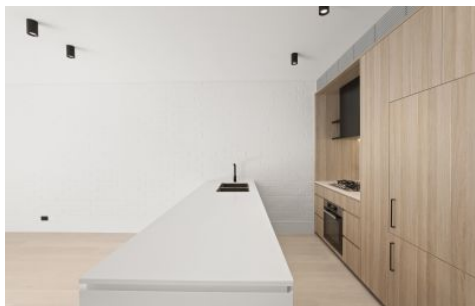


TROW JONES



204/89 Ebley Street Bondi Junction NSW

2  2  1 

Trow Jones has a limited selection of 2 and 3 bedroom apartments to choose from in the recently completed high-end development 'The Grand' in Bondi Junction.

Literally footsteps from Westfield and Bondi Junction train station and only a short drive or bus ride from the Eastern Suburbs' best beaches, The Grand presents a unique opportunity for the astute investor or owner-occupier in search of a convenient lifestyle.

Features

- North-facing balcony
- Basement car park
- Stone benchtops and splashbacks
- Miele kitchen appliances
- Integrated fridge and dishwasher

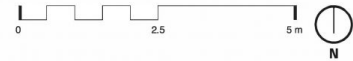
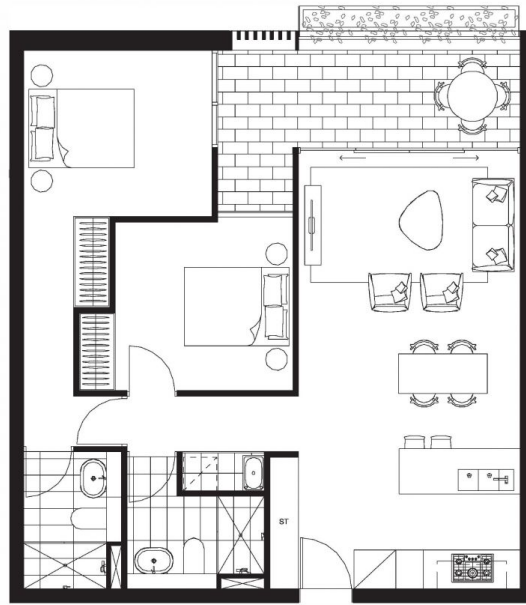
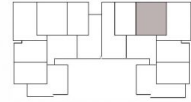
Price : Guide \$1,450,000 - \$1,545,000
Building Size : 75 sqm
View : <https://www.trowjones.com/5888681>



Mark Jones
02 8667 5330

<https://www.trowjones.com>

LEVEL 2



GRAND
BONDI JUNCTION

2 BEDROOMS
2 BATHROOMS
1 CAR SPACE

LEVEL 2
RESIDENCE
204

INTERNAL AREA 75m²
EXTERNAL AREA 10m²
TOTAL AREA 85m²
STORAGE
APARTMENT 3m³
BASEMENT 5m³

TROWJONES.COM
0467 942 377

iris TROW JONES

DISCLAIMER: 1. Please note, this layout plan was produced prior to construction. 2. The information is believed to be correct, but is not guaranteed. 3. Changes may be made during construction and dimensions, areas, fittings, landscaping, finishes and specification are subject to change without notice in accordance with the provisions of the contract for sale. 4. The furniture and furnishings depicted are not included with any sale and purchasers must refer to their contract for sale for the list of inclusions. 5. The position of the furniture and furnishings should not be taken to be indicative of final positions of power points, tv connection points and the like. 6. Prospective purchasers must rely on their own enquiries. 7. All graphics including the layout and balustrades and the like are indicative only. 8. Bulkheads for services are not depicted. 9. The layout plan is at an unspecified scale.