

TROW JONES



1703/226 Victoria Street Potts Point NSW

3 3 1

Omnia epitomises luxe living, with the very best Sydney has to offer right on your doorstep. Designed by award-winning architects Durbach Block Jagers, this iconic glass-clad building is located in the heart of Potts Point, with its incredible eateries, stores, leafy streets and high-end properties. Moments from the train station and one stop from the CBD.

Features

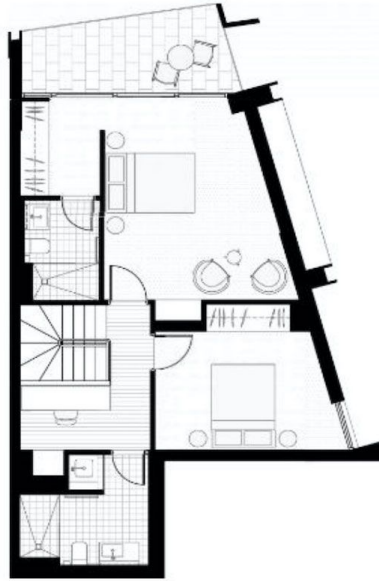
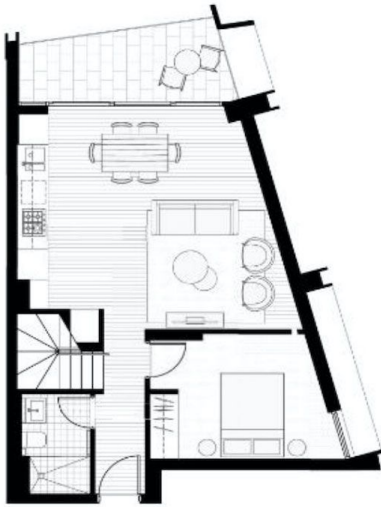
- Stunning harbour & city skyline views
- Sun-drenched north-west aspect
- Basement car park
- 24-hour Concierge
- Ducted air conditioning
- Miele appliances
- Video intercom

Price : \$3,780,000
Building Size : 113 sqm
View : <https://www.trowjones.com/5888683>



Mark Jones
02 8667 5330

<https://www.trowjones.com>

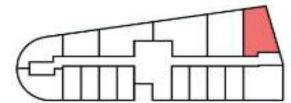


3 Bed

Internal Area 100-118 sqm
Balcony Area 14-16 sqm

Units

5.05, 7.05, 9.03, 17.03



TROW JONES

This floor-plan including furniture, fixture measurements and dimensions are approximate and for illustrative purposes only.
Trow Jones gives no guarantee, warranty or representations as to the accuracy and layout. Prospective purchasers must rely on their own enquiries.