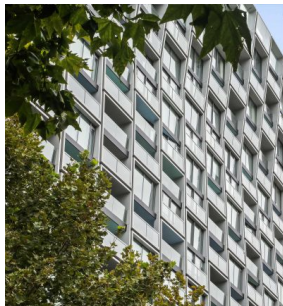


TROW JONES



1509/226 Victoria Street Potts Point NSW

3  **2**  **1** 

Omnia epitomises luxe living, with the very best Sydney has to offer right on your doorstep. Designed by award-winning architects Durbach Block Jagers, this iconic glass-clad building is located in the heart of Potts Point, with its incredible eateries, stores, leafy streets and high-end properties. Moments from the train station and one stop from the CBD.

Features

- Harbour & city skyline views
- Basement car park
- 24-hour Concierge
- Ducted air conditioning
- Miele appliances
- Video intercom
- Butler's pantry

Price : \$3,220,000
Building Size : 100 sqm
View : <https://www.trowjones.com/5888685>



Mark Jones
02 8667 5330

<https://www.trowjones.com>

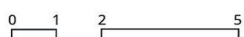


3 Bed

Internal Area 100-114 sqm
Balcony Area 7-13 sqm

Units

15.09



TROW JONES

This floor-plan including furniture, fixture measurements and dimensions are approximate and for illustrative purposes only.
Trow Jones gives no guarantee, warranty or representations as to the accuracy and layout. Prospective purchasers must rely on their own enquiries.