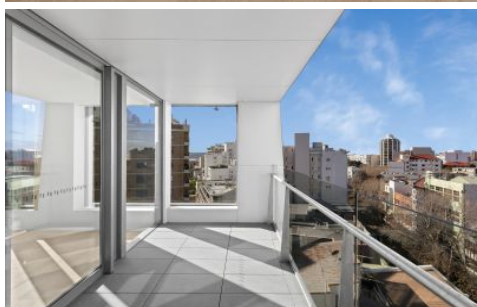


TROW JONES



1105/226 Victoria Street Potts Point NSW

1 1

Designed by award-winning architects Durbach Block Jagers - Omnia Omnia epitomises luxe living, with the very best Sydney has to offer right on your doorstep. Designed by award-winning architects Durbach Block Jagers, this iconic glass-clad building is located in the heart of Potts Point, with its incredible eateries, stores, leafy streets and high-end properties. Moments from the train station and one stop from the CBD.

Features

- Study nook
- Sun-drenched north-east aspect
- Views over Rushcutters Bay
- 24-hour Concierge
- Ducted air conditioning
- Miele appliances

Price : \$1,080,000
Building Size : 52 sqm
View : <https://www.trowjones.com/5888696>



Mark Jones
02 8667 5330

1 Bed + Study

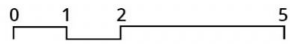
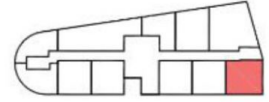
Internal Area 48-51 sqm

Balcony Area 9 sqm



Units

11.05, 12.05, 13.05



TROW JONES

This floor-plan including furniture, fixture measurements and dimensions are approximate and for illustrative purposes only. Trow Jones gives no guarantee, warranty or representations as to the accuracy and layout. Prospective purchasers must rely on their own enquiries.