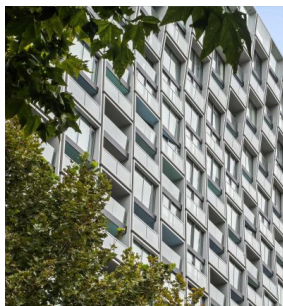


# TROW JONES



1106/226 Victoria Street Potts Point NSW

1  1 

Omnia epitomises luxe living, with the very best Sydney has to offer right on your doorstep. Designed by award-winning architects Durbach Block Jagers, this iconic glass-clad building is located in the heart of Potts Point, with its incredible eateries, stores, leafy streets and high-end properties. Moments from the train station and one stop from the CBD.

#### Features

- Study nook
- Views over Rushcutters Bay
- 24-hour Concierge
- Ducted air conditioning
- Miele appliances
- Video intercom
- Basement storage cage

**Price** : \$968,000  
**Building Size** : 50 sqm  
**View** : <https://www.trowjones.com/5888697>



**Mark Jones**  
02 8667 5330

### 1 Bed + Study

Internal Area 49-53 sqm

Balcony Area 3-5 sqm

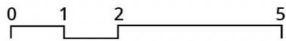
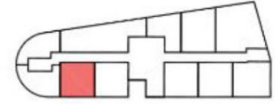


### Units

11.06, 11.07, 11.08, 11.09

12.06, 12.07, 12.08, 12.09

13.06, 13.07, 13.08, 13.09



# TROW JONES

This floor-plan including furniture, fixture measurements and dimensions are approximate and for illustrative purposes only. Trow Jones gives no guarantee, warranty or representations as to the accuracy and layout. Prospective purchasers must rely on their own enquiries.