

TROW JONES



11/1A Macpherson Street Waverley NSW

2  1  1 

Offered to the market for the first time in over 37 years - this is the best unit in the building.

This 2-bed unit with beautiful ocean views, a lock-up garage and great location is perfect for buyers looking for an entry level into the sought-after Eastern Suburbs or to add value with a cosmetic renovation. The bones of the unit are excellent with stunning views and all day sun. While the interior is dated, it is bright and airy with an ideal layout and well placed rooms.

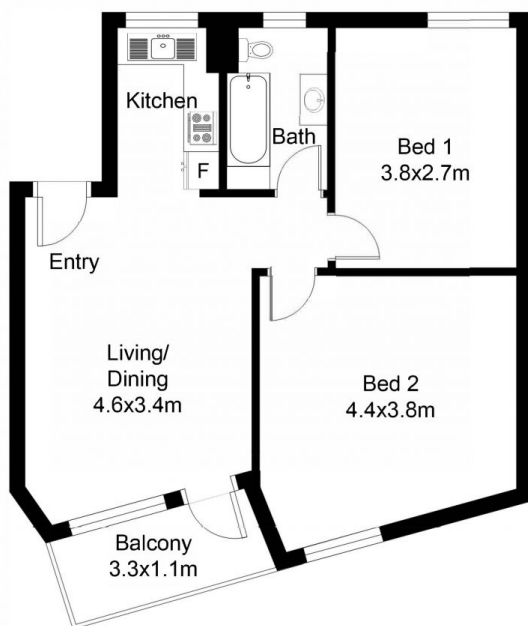
The open-plan living area opens onto a sunny north-east facing balcony with beautiful views across the treetops to the ocean. The master bedroom is a generous size, also with ocean views, and there is a second double bedroom. Underneath is a secure lock-up garage with an abundance

Price : \$ 925,000

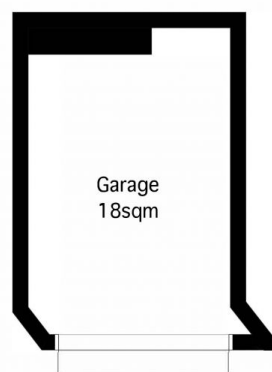
View : <https://www.trowjones.com/6329239>



Mark Jones
02 8667 5330



FLOOR PLAN



LOCK UP GARAGE

TROW JONES

This floor plan including fixture measurements and dimensions are approximate and for illustrative purposes only. Trow Jones gives no guarantee, warranty or representation as to the accuracy and layout.

11/1A Macpherson Street, Waverley