

TROW JONES



10 Palmer Lane Darlinghurst NSW

2 2

Transport yourself to the rustic laneways of Provence in this delightfully renovated terrace that's brimming with appeal and charm. Nestled in a picturesque laneway, it was originally built c1860 and has been restored and transformed, working with its superb period features to create a residence that is functional, beautiful and filled with character. A master stonemason was brought in to restore the original sandstone wall which stands as a striking feature throughout the home. Two sun-drenched alfresco spaces - a rare find in terrace living - flow off the kitchen and living area. Lifestyle surrounds this home - stroll to dining hotspots, bus services, rail, Hyde Park and the CBD.

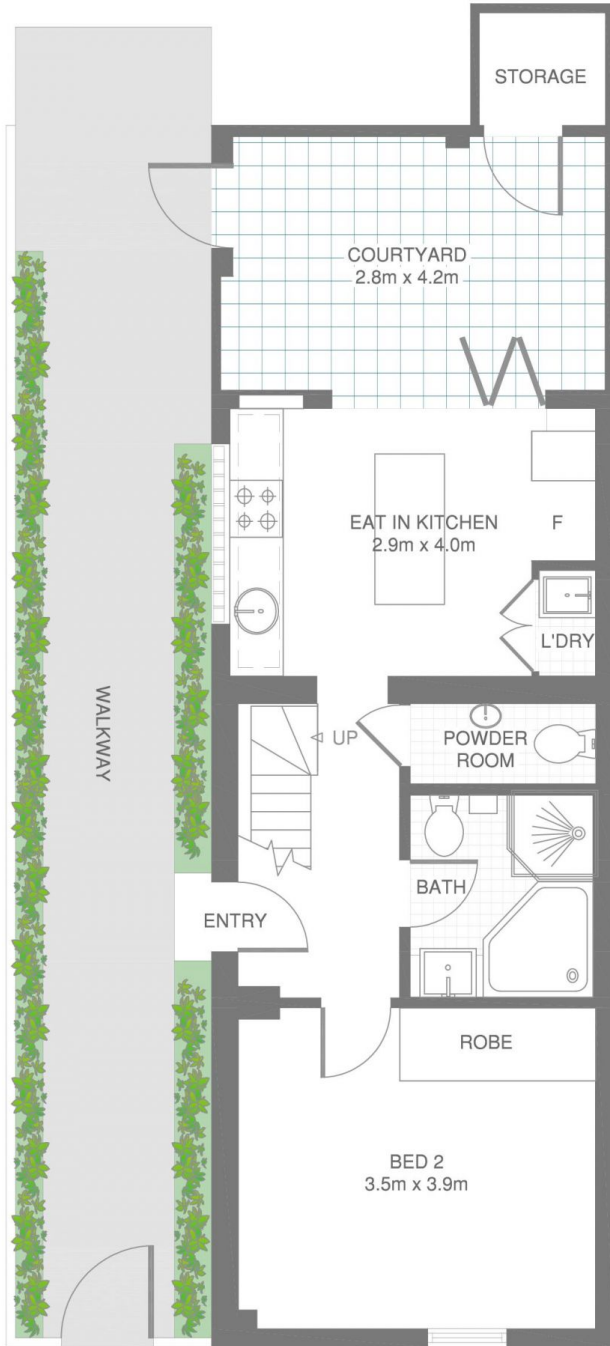
Price : \$ 2,156,000
Building Size : 91 sqm
View : <https://www.trowjones.com/6570157>



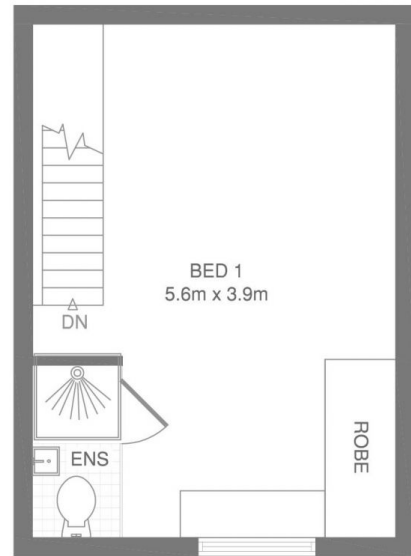
Mark Jones
02 8667 5330

? Rustic charm from the street with wrought iron window grills

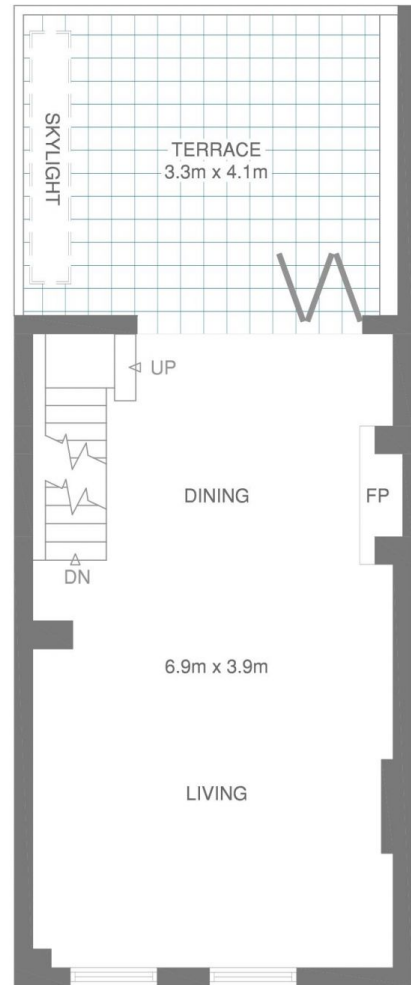
DARLINGHURST
10 PALMER LANE



GROUND FLOOR



SECOND FLOOR



FIRST FLOOR

*PLANS SHOWN ONLY INDICATIVE OF LAYOUT. DIMENSIONS ARE APPROXIMATE.

This floor plan is provided for indicative purposes only.

Measurements are approximate and not to scale. The vendor, agency and supplier will accept no liability for its accuracy. Interested parties are advised to make their own independent enquiries.

