

TROW JONES



G.01/278 Birrell Street Bondi NSW

3 2 1

Positioned at the high point of Birrell Street, this brand-new boutique collection of 1, 2 and 3-bedroom apartments marks the beginning of something inspiring.

Recently completed by award-winning builder Dallad and designed by Nicholas Tang Architects the meticulously crafted high-end interiors blend seamlessly inside and out with finishes inspired by nature itself. Breathe in the Pacific Ocean air, drawing a sense of calm and tranquillity that only the finest coastal living can deliver. Each apartment is its own private and exclusive sanctuary with ocean or district views.

Built with sustainability in mind, The Rise features common areas lit by solar panels, bike storage & EV charging stations.

Price : Contact Agent

View : <https://www.trowjones.com/7795984>



Mark Jones
02 8667 5330

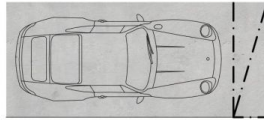
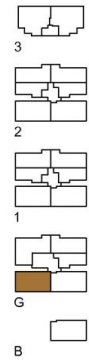
THE RISE BONDI

TROW JONES

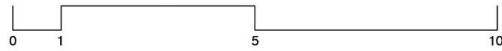
APARTMENT G.01

3 Bedrooms
2 Bathrooms
1 Car Space

Internal Area 90m²
External Area 65m²
Basement Area 13m²



Single carspace with over bonnet storage



278 BIRRELL STREET, BONDI

Disclaimer: Please note this floor plan is for marketing purposes and is to be used as a guide only. Changes may be made during the design development process and dimensions, fixtures, fittings, finishes and specifications may be subject to change without notice.