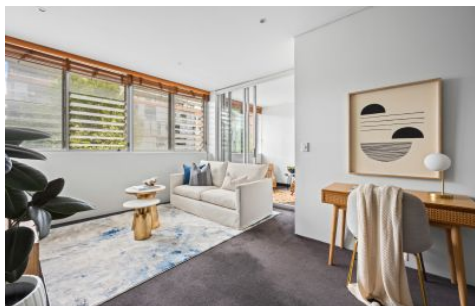


TROW JONES



202c/254 Anzac Parade Kensington NSW

1 1 1

Welcome to Capella Kensington, where modern luxury meets the perfect opportunity for first-home buyers and investors alike. Designed by award-winning architects iWolff Atelier, this outstanding 1-bedroom apartment is not just an investment; it's a gateway to a convenient and stylish urban lifestyle.

Price : \$ 680,000

View : <https://www.trowjones.com/7807256>

Features

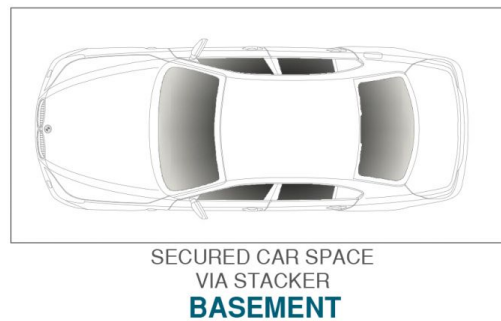
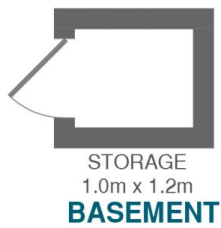
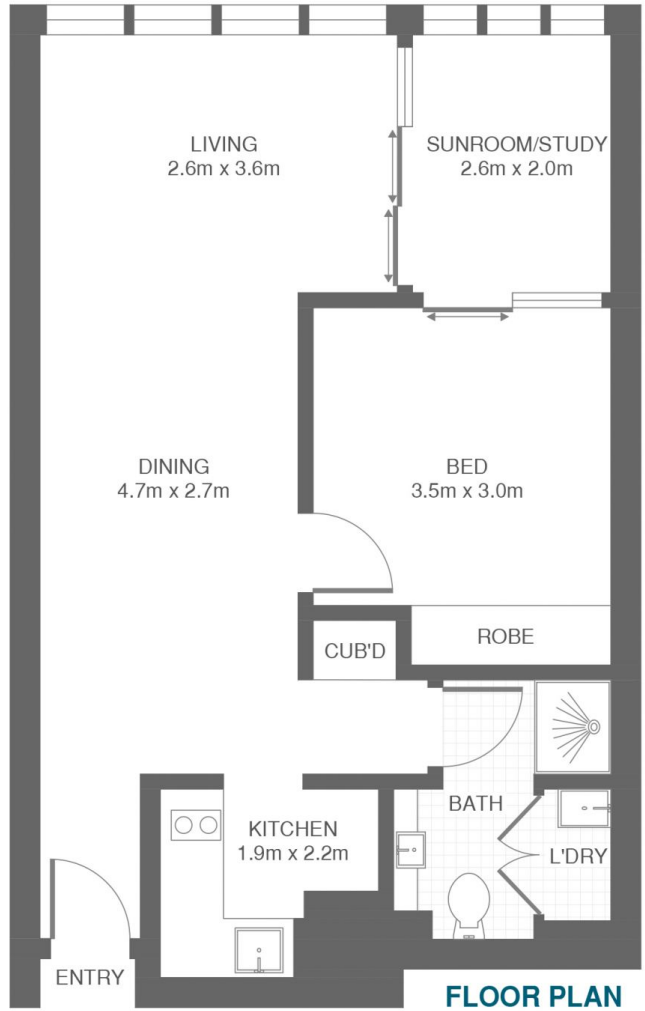
- ? Prime location near UNSW, Hospitals and the Light Rail
- ? Kitchen with top-of-the-line appliances
- ? Level lift access and video intercom
- ? Easy access to secure car space via Darling Street
- ? Communal heated pool and beautifully landscaped gardens
- ? Stamp duty exemption for first-home buyers



Mark Jones
02 8667 5330

<https://www.trowjones.com>

KENSINGTON 202C/254 ANZAC PARADE



*PLANS SHOWN ONLY INDICATIVE OF LAYOUT. DIMENSIONS ARE APPROXIMATE.
Measurements are approximate and not to scale. The vendor, agency and supplier will accept no liability for its accuracy. Interested parties are advised to make their own independent enquiries.