

# TROW JONES



8/42 Flinton Street Paddington NSW

3 2 2

Elevate your living experience with this expansive three-bedroom apartment, graced by a coveted northerly aspect and harbour glimpses from the entertainers' terrace.

**Building Size** : 129 sqm  
**Land Size** : 177 sqm  
**View** : <https://www.trowjones.com/7810260>

Nestled within the exclusive and tightly held Paddington Green development, this residence blends thoughtful design with the allure of desirable indoor-outdoor flow, creating a haven for both everyday living and entertaining.

Indulge in a lifestyle where luxury and convenience converge. Paddington Green is not just an address; it's an invitation to experience the pleasure of resort-like living right in the heart of Paddington Village.

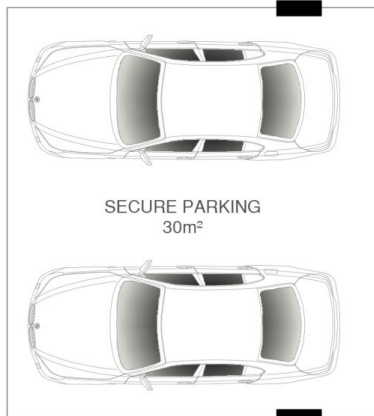
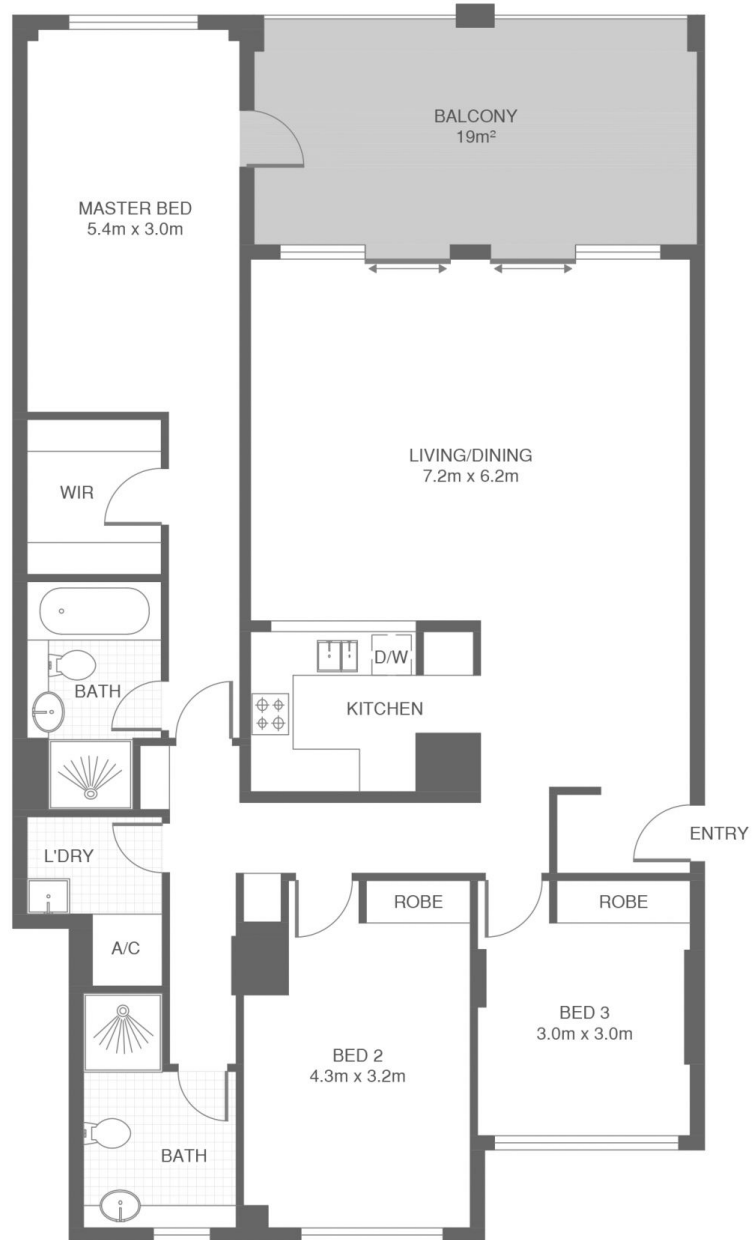
#### Features

- ? 177sqm on title | Level lift access
- ? Sunny northern aspect with harbour glimpses
- ? Master with WIR & terrace access
- ? 2nd & 3rd double bedrooms with built-ins
- ? Large bathrooms & internal laundry
- ? Ducted air-conditioning
- ? Security building with double parking
- ? Indoor lap pool, sauna, spa, gym & onsite manager
- ? Moments to RHW Park, Five Ways & Oxford Street



**Mark Jones**  
02 8667 5330

# PADDINGTON 8/42 FLINTON STREET



(NOT ACTUAL LOCATION)



\*PLANS SHOWN ONLY INDICATIVE OF LAYOUT. DIMENSIONS ARE APPROXIMATE.

Measurements are approximate and not to scale. The vendor, agency and supplier will accept no liability for its accuracy. Interested parties are advised to make their own independent enquiries.