

# TROW JONES



**4/39 Brisbane Street Bondi Junction NSW**

**3**  **2** 

A sophisticated blend of high-end finishes and original details, this large, stylish, northwest-facing apartment is perfectly designed for a luxurious contemporary lifestyle. It's set in a boutique Salvation Army Citadel conversion with soaring ceilings on a leafy green cul-de-sac just footsteps from Queens Park, Westfield Bondi Junction and the train station.

#### Features

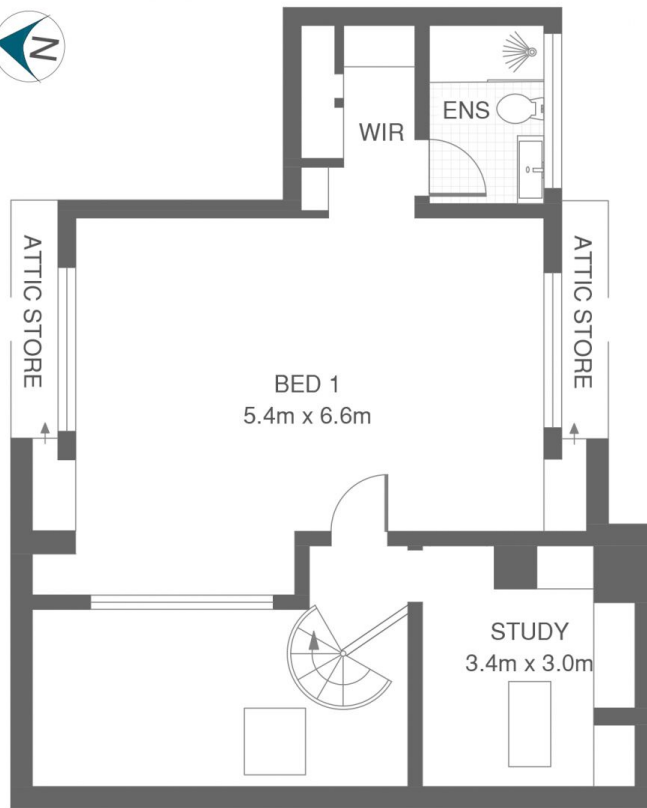
One of only 4 apartments in the building, 141sqm on title  
Contemporary split-level residence of double brick build  
Open plan interiors with American oak floors, high ceilings  
Flows via bi-fold doors to a generous entertainers' balcony  
Deluxe Black Granite kitchen with integrated Miele appliances  
3 spacious double bedrooms with built-in wardrobes

**Price** : \$ 2,400,000  
**Building Size** : 125 sqm  
**Land Size** : 141 sqm  
**View** : <https://www.trowjones.com/7929106>

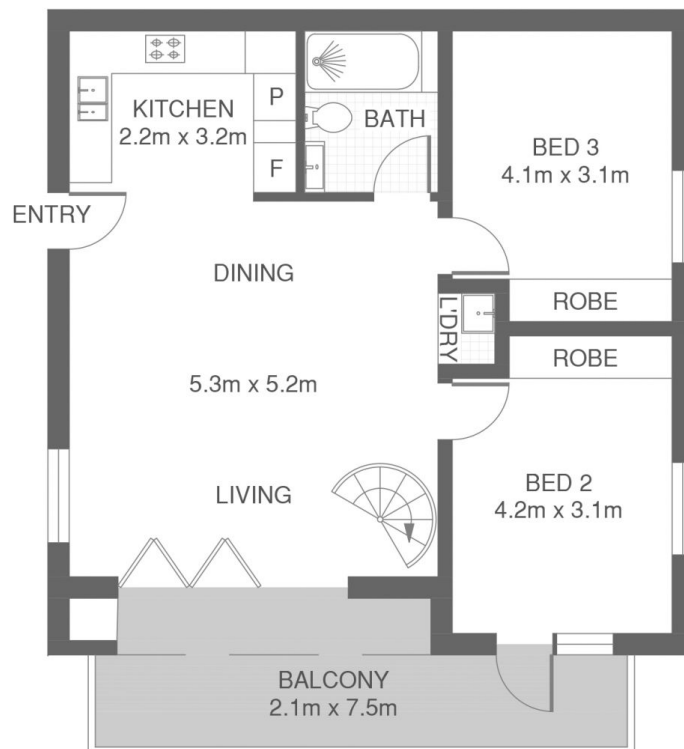


**Mark Jones**  
**02 8667 5330**

<https://www.trowjones.com>



**UPPER LEVEL**



**ENTRY LEVEL**



\*PLANS SHOWN ONLY INDICATIVE OF LAYOUT. DIMENSIONS ARE APPROXIMATE.

Measurements are approximate and not to scale. The vendor, agency and supplier will accept no liability for its accuracy. Interested parties are advised to make their own independent enquiries.